



February/March 2010

# Los Angeles Basin Geological Society Newsletter

**March 25<sup>th</sup> (Thursday), 2010 Meeting: Bob Dams** – Business Development Manager  
Oil & Gas MDA Geospatial Services Inc. *will speak on .....*

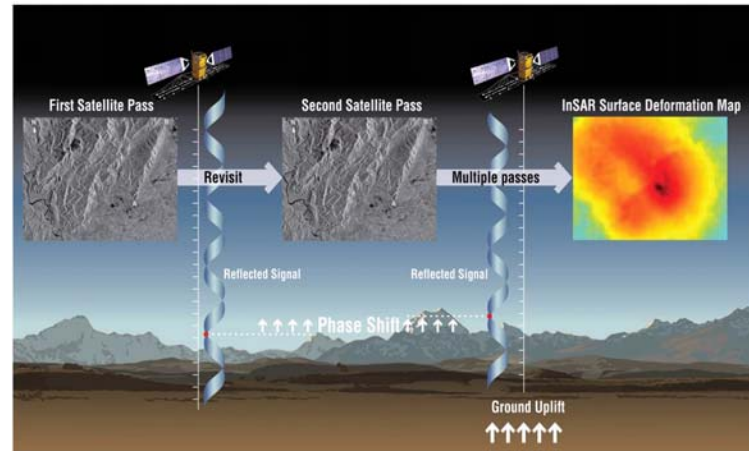
## **Monitoring Land Surface Motion from Space**

### Speaker Abstract

This presentation will touch on a broad range of RADARSAT imagery applications for Exploration and Production, but will emphasize our most recent developments in the operational use of RADAR interferometry for onshore production monitoring.

MDA delivers Oil & Gas field and Carbon Capture & Storage (CCS) site monitoring information using Interferometric Synthetic Aperture Radar (InSAR). To do so, MDA utilizes its RADARSAT 1 & 2 satellites to precisely measure the distance between the satellite and the ground on two or more imaging tracks. We use our specialized InSAR software to create deformation measurements from the RADARSAT microwave pulses. The slight variations in pulse distances traveled (or phase shifts) on the different passes gives precise millimeter level measurements of the change in the ground elevation. It is rocket science, but I will break this down into something understandable for the audience.

This information is used globally by Oil & Gas and CCS clients to improve the efficiency of their injection and production operations and decrease the likelihood of some of the more significant risks these companies face such as over injection, water leaks, blowouts, environmental damage, facilities damage, well casing failures, and risks to human safety.



### Speaker Biography

Bob Dams has 30 years of high technology business experience including senior science, business development, executive and director level management positions. He has worked in the field and office on more than a few remote sensing and GIS projects, providing senior technical and managerial consulting advice to North American and International sustainable resource and environmental managers. At MDA he is responsible for developing our energy business around the globe – from operational use of RADARSAT interferometry for monitoring of oil and gas fields of the SJV, to Carbon Sequestration monitoring in Algeria; to all-weather maritime surveillance of ships, platforms, seeps and spills in such diverse areas as the Gulf of Mexico, Chukchi Sea and Gulf of Guinea. He has been responsible for management of 30+ professional scientific and technical consultants on complex research & development to operational geospatial information projects. He earned a M.S. degree from Colorado State University in 1984, with his undergraduate work in B.Sc. Forestry, Univ. of Alberta, 1978. He is currently Business Development Manager, Energy for MacDonald, Dettwiler & Associates, Canada.

## Meeting Time, Place, Cost and Reservations

### Time:

**Thursday, March 25, 2010**

### Typical Meeting Agenda

**Lunch Served: 11:30 AM to 12:00PM**  
**Announcements: 11:45 AM to 12:00 PM**  
**Guest Speaker: 12:00 PM to 12:30PM**  
**Questions/Close: 12:30 PM to 12:45 PM**

### Place:

**The Grand at Willow Street Conference Center** located at 4101 East Willow Street, Long Beach, CA. (562-426-0555). Take Lakewood Boulevard south from the San Diego Freeway (405), turn west onto Willow Street and turn right onto Grand Avenue at the sign for the Center. Park free in the garage structure.

### Cost:

**Lunch and Speaker: \$20.00 with reservations**  
**\$25.00 without reservations**  
**Student: FREE (Lunch and Speaker)**

### Meeting Reservations:

Make your reservations using our web site at [www.labgs.org](http://www.labgs.org), by calling Marieke at (562) 624-3364., or emailing Marieke\_Gaudet@Oxy.com. **Reservations made prior to Tuesday before the meeting is appreciated**, but walk-ons are welcome.

## LABGS Don Clark Brunton Award

*The Society is turning their attention toward the identification of a qualified applicant for the 2010 award. Check our website.*

The LABGS Don Clarke Brunton Award was created as an annual gift of encouragement and recognition to those community college students who show dedication and passion to the field of Geoscience. It is our goal to encourage future geoscientists in their pursuits. Douglas Thoin was chosen as the recipient of the 2009 Don Clarke Brunton Award. Douglas was nominated for this award by Dr. Doug Britton of Long Beach City College, who provided the scholarship committee with his qualifications and a letter of recommendation.

## Contact Us – The LABGS Board

President: Bill Long (213) 225-5900 x 205  
[William.long@breitburn.com](mailto:William.long@breitburn.com)

VP & Program: Greg Hummel  
(213) 225-5900 x 251  
[Greg.hummel@breitburn.com](mailto:Greg.hummel@breitburn.com)

Treasurer: Bert Volger  
[hvogler@kleinfelder.com](mailto:hvogler@kleinfelder.com)

Secretary: Marieke Gaudet (562) 624-3364  
[marieke\\_gaudet@oxy.com](mailto:marieke_gaudet@oxy.com)

Scholarships: Jean Kulla (949) 500-3095  
[k2mobile@MSN.com](mailto:k2mobile@MSN.com)

**OUR WEB SITE ADDRESS IS:**  
[www.labgs.org](http://www.labgs.org)

## Student Sponsorship

Core Lab sponsored our Student lunches for the February meeting. Thank you Core Lab for your generosity.

**CORE LABORATORIES**  
**Petroleum Services Division**  
**3437 Landco Drive**  
**Bakersfield, Ca 93308**

## Upcoming 2010 LABGS Speaker/Event Schedule

**April 22, 2010** – Eric pounders is the geologist in charge of education and outreach for the United States Geological Survey (USGS) in Pasadena, California. His Southern California office is part of the Earthquakes Hazards Program, which in collaboration with Caltech, monitors valuable seismic and Global Positioning Systems data for earthquake studies in Southern California: His talk will touch on the latest earthquake studies being done.

**May 27, 2010 – Canceled, due to the conflict with the Pacific Section AAPG meeting.**

**June 24, 2010** – TBA, Substitute for missed May meeting. Last meeting before Summer Break.

*If you have a speaker suggestion, please mention it to a Board member!!*

## Other Events

### PSAAPG 2010 Convention

May 27-29, 2010 Anaheim, see [www.PSAAPG.org](http://www.PSAAPG.org) for more details

### Core Lab – Client Education and Training

**Course:** May 11-13, 2010 Bakersfield, for details contact Linda Specht, [Linda.specht@corelab.com](mailto:Linda.specht@corelab.com) or 661-325-5657

### National AAPG 2010 Convention

New Orleans, LA, 11-14 April 2010, see [www.AAPG.org](http://www.AAPG.org) for more details.




## LABGS Brunton Award

The LABGS Brunton Award is given to a qualified undergraduate student attending a four-year LA Basin College or University currently pursuing a baccalaureate degree in Geology or the Earth Sciences. *The Society is currently looking for qualified applicants for the 2010 award. Check our website for details and forms.*

## TOTY

The Teacher of the Year (TOTY) Award is a \$250 award for a teacher with 3+ years experience in K-12, who teaches at least one unit per year in the natural resources. Please see our website [www.LABGS.org](http://www.LABGS.org), for more details. Thomas J "Tom" Hollis was chosen as the recipient for 2009.

Los Angeles Basin Geological Association Advertising Costs 2008-2009		
<u>Newsletter and SoCal website posting:</u>		
• Business Card size ad	\$25/month	\$230/year
• 1/4 Page	\$45/month	\$450/year
Website posting only: \$20/month		
		

## President's Note

*To all our members,*

If you happen to not make the February talk, you missed a great one given by Paul Blubaugh of Schlumberger Information Solutions (SIS) titled "A New Look for your Old data". Door prizes even included free passes to the Core lab course as detailed in our 'Other Events Section' - How great is that! Now if you ignored the LABGS Speaker Announcement sent out prior to the meeting, and was waiting for the February Newsletter before going, then my apologies are in order. The February Newsletter never made it to press. I will try very hard in the future to not let this happen again. Contained within these pages are valuable and helpful information on current LABGS events, speaker announcements, awards and AAPG news. So - look it over.

The LABGS committee is trying very hard to bring you a diverse program that will interest a wide spectrum of members. The LABGS committee is very please to have Bob Dams, Business Development Manager, Energy for MacDonald, Dettwiler & Associates, Canada coming to speak on a broad range of RADARSAT imagery applications for Exploration and Production. It should be very interesting, so plan to attend.

Make sure you consider attending the upcoming Pacific Section AAPG convention - there are a great many good talks, field trips and exhibits planned. Not to mention the crowd of professionals you will have the opportunity to see and talk with if so inclined.

*Bill*



# Los Angeles Basin Geological Society Membership Form

Join the LABGS and become a member of the Pacific Section AAPG all for one low price of \$12.00 per year - 2 West Coast Geoscience Organizations for the price of one



## Membership Benefits

- LABGS Membership
- Monthly Luncheon Meetings with Strong Technical Programs
- Pacific Section AAPG Membership
- Pacific Section AAPG Bi-Monthly Newsletter
- Discounts for PSAAPG Bookstore Publications
- Bi-Annual West Coast Geoscience Directory - *next edition 6/03*
- Networking and Social Opportunities with Fellow Geoscientists

### Current Annual LABGS/PSAAPG Dues

1 Year Option = \$12.00 \$ \_\_\_\_\_  
3 Year Option = \$36.00 \$ \_\_\_\_\_

### Extended E-Mail Announcement List Fees

To receive meeting notices from SJGS and CGS

1 Year Option = \$12.00 \$ \_\_\_\_\_  
3 Year Option = \$36.00 \$ \_\_\_\_\_

### PSAAPG Foundation Contributions

B. Hacker Publication Fund \$ \_\_\_\_\_  
Martin Van Couvering Fund \$ \_\_\_\_\_  
Dibble Map Foundation \$ \_\_\_\_\_  
California Well Sample Repository \$ \_\_\_\_\_  
John Kilkenny Scholarship Fund \$ \_\_\_\_\_  
PSAAPG Foundation Trust Fund \$ \_\_\_\_\_

### TOTAL PAYMENT

Total Amount Enclosed \$ \_\_\_\_\_

### Essential Member Information

Last Name \_\_\_\_\_  
First Name \_\_\_\_\_  
Middle Initial \_\_\_\_\_  
E-Mail Address \_\_\_\_\_  
Mail Address \_\_\_\_\_  
*Res or Bus ?* \_\_\_\_\_

### Additional Directory Information

Employer \_\_\_\_\_  
Position / Title \_\_\_\_\_  
Bus Phone # \_\_\_\_\_  
Res Phone # \_\_\_\_\_  
Fax Phone # \_\_\_\_\_  
Spouse's Name \_\_\_\_\_  
Education *Highest Degree* \_\_\_\_\_ *Year* \_\_\_\_\_  
School \_\_\_\_\_

Signature \_\_\_\_\_

*Annual membership is handled through PSAAPG and runs from July 1, through June 30. If you are already a current member of PSAAPG and you selected LABGS affiliation you are already a member of the LABGS.*

**Please Make Checks out to PSAAPG and mail along with member form to:  
PSAAPG P.O. Box 1072, Bakersfield, CA 93302**