



September 2015

LOS ANGELES BASIN GEOLOGICAL SOCIETY MEETING ANNOUNCEMENT

September 24 (Thursday)

Susan Hough, Ph.D.

Research Geophysicist, US Geological Survey
Pasadena, California

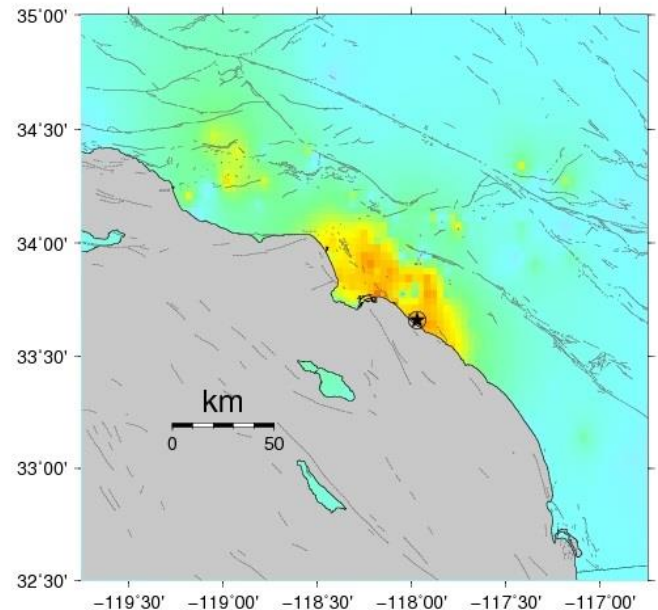
What's Shaking LA? New Insight from the 1933 Long Beach Earthquake

Abstract

The 1933 ML6.3 Long Beach Earthquake occurred on the Newport-Inglewood fault near the Huntington Beach-Newport Beach City boundary, extending to the northwest for a distance of about 16 km. Only limited instrumental data are available for this important earthquake; however, a detailed assessment of damage and other effects provides a detailed view of shaking throughout the greater Los Angeles area. Dr. Hough will discuss how these data can be used to better understand how shaking varies across the region due to local geological structure. She will also discuss the potential interplay between oil exploration activities and 20th century earthquakes in southern California and elsewhere.

Speaker's Biography

Susan Hough, Ph.D. is a research geophysicist who has worked with the US Geological Survey in Pasadena, California, since 1992. Her main areas of scientific interest include earthquake



ground motions, triggered earthquakes, induced earthquakes, historical earthquakes, and seismic hazard. She is also interested in science

communication, and the development of technical capacity in developing countries including Haiti, Nepal, and Burma. She received an BA degree with honors in geophysics from UC Berkeley in 1982 and a PhD in Earth Sciences from Scripps Institution of Oceanography in 1988. She has co-authored over 120 peer-reviewed articles, and five books for non-specialist audiences. She has served as an associate editor and editor in chief of several leading technical journals, has served on the Board of Directors of the Seismological Society of America and was elected Fellow of the American Geophysical Union in 2009.

meeting to receive discount price noted above. As always walk-ins are welcome.

Student Sponsorship

Looking for Student Lunch sponsors. If you or your Business/Organization would like to become a Student Lunch Sponsor, please let us know.

Special News

Welcome back and we hope everyone had a wonderful summer.

Meeting Time, Place, Cost and Reservations

Time:

Thursday, September 24, 2015

Meeting Agenda

Lunch Served: 11:30 AM to 12:00PM
Announcements: 11:45 AM to 12:00 PM
Guest Speaker: 12:00 PM to 12:45 PM
Questions/Close: 12:45 PM to 1:00 PM

Place:

The Grand at Willow Street Conference Center located at 4101 East Willow Street, Long Beach, CA. (562-426-0555). Take Lakewood Boulevard south from the San Diego Freeway (405), turn west onto Willow Street and turn right onto Grand Avenue at the sign for the Center. Park free in the garage structure.

Cost:

Lunch and Speaker: \$25.00 with reservations
\$30.00 without reservations
Retired: \$20.00
Student: \$5.00

Meeting Reservations:

Make your reservations using our web site at www.labgs.org, or by calling Graham Wilson (562)-326-5278, or emailing gwilson@shpi.net.

PLEASE Make:☺ Reservations must be made by 10:00 AM Tuesday morning prior to Thursday's

Contact Us – The LABGS Board

President: Jean Kulla

(949) 500-3095
k2mobile@MSN.com

VP & Program: Jacqueline Chavez

(562) 624-3479
Jacqueline.Chavez@crc.com

Treasurer: Bert Vogler

(562) 432-1696
hvogler@kleinfelder.com

Secretary: Graham Wilson

(562)-326-5278
gwilson@shpi.net

Scholarships: Karla Tucker

(714) 658-0474
ktr2@aol.com

Special projects: Bill Long

(213) 225-0205
william.long@breitburn.com

**OUR WEB SITE
ADDRESS IS:
www.labgs.org**